



Holmecrest Homes

8133 Erdrick Place, Philadelphia, PA 19136

Holmecrest Homes is an 84-unit low-rise older adult development located in Northeast Philadelphia featuring ovens in each unit, an on-site laundry room and on-site church. The development is close to public transportation, I-95 & other public services. Center City can also be accessed with ease from the development.

At Holmecrest Homes, all aspects of living are designed for older adults. The community offers its residents an on-site social work program, a computer lab, arts and crafts activities and a resident leader. Residents can take in some fresh air at the garden and picnic area, which is complemented by tables complete with umbrellas.

COMMUNITY SERVICES

- Library**
Holmesburg Branch, 7810 Frankford Avenue
- Health Centers**
Health Care Center #10, 2230 Cottman Avenue
- Police Station**
15th District, 2831 Levick Street
- Fire Station**
Engine 36/Ladder 20, 7818 Frankford Avenue
- Local Welfare Assistance Office**
4109 Frankford Avenue
- Local Social Security Office**
2373 Welsh Road

Interior Features

- Laundry Room
- Oven
- Gas & Electric
- On Site Maintenance
- Community Room

Exterior Features

- Parking Lot
- Garden
- Picnic Area

contact info

215.684.5930 phone
215.684.5954 fax

office hours

Monday to Friday
9 a.m. to 5 p.m.

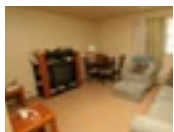
website

www.pha.phila.gov/



SHOPPING CENTERS / BANKS

Wachovia bank and credit union are within walking distance. Pathmark and ShopRite supermarkets less than one mile away. Church on site.



PUBLIC TRANSPORTATION

66 Bus Frankford Avenue

